



Perinatal Forum  
NPfIT for Maternity  
Maternity and Antenatal Screening

Heather Develin  
HealthSystems Consultants Limited  
18<sup>th</sup> May 2005



## Agenda

- NPfIT/Connecting for Health and the NSC
- Connecting for Health Liaison Team
- Fetal, maternal and newborn screening programmes
- Way Forward

## NPfIT...NHS Connecting for Health

- National Programme for IT (NPfIT) major programme for the delivery of software and services to the NHS. Now known as **NHS Connecting for Health**
- Concept of the NHS Care Records Service (NCRS)
- “Cradle to Grave” patient based records supporting integrated clinical information systems across the NHS
- Original OBS
  - Defines wide ranging generic functionality  
Eg Patient Index, Assessment, Integrated Care Pathways and Care Planning, Clinical Documentation, Scheduling, Order Communications, Results Reporting, Decision support plus department specific functionality eg Maternity
  - Section 103: Prevention Screening and Surveillance
  - Sections 114/115: Laboratory and Diagnostic Services (additional service)
  - Requirement to support NSFs (including Children’s NSF although not available at the time)
  - Requirement for Information and Audit

## Connecting for Health/NSC

- National Screening Committee have promoted screening with Connecting for Health
  - Lobbying of key people
  - Flagging of key screening issues including requirements for antenatal and newborn screening
    - Contribution to Best Practice Groups
  - Creation of Connecting for Health Screening Liaison Team
  - James Freed providing additional resource in Leeds two days a week to represent the screening programmes more closely.
  - Strategy Report

## Connecting for Health Screening Liaison Team

- Dr Muir Gray NSC Programme Director
- Heather Develin Co-ordinator between NPfIT and the liaison team with specific responsibility for antenatal sickle and thalassaemia and newborn bloodspot screening and laboratory issues.
- Dave Graham Specific responsibility for Down's, Fetal anomaly and Chlamydia
- Christian Martin Specific responsibility for Diabetic Retinopathy and Vascular Disease
- Paul Ryder Specific responsibility for Cancer screening programmes
- Nick Waddell Specific responsibility for Newborn hearing screening and the Newborn Physical

## Strategy Document

- Identify key issues and requirements of the screening programmes
- Highlight areas for specific attention eg dependence on laboratory systems, requirements for linked antenatal/newborn records
- Makes recommendations regarding the way in which screening solutions be delivered eg
  - National functionality, local functionality, generic functionality and screening programme specific configuration
  - Data reviews
  - Migration requirements
  - Determine the priority associated with the delivery of systems to support screening programmes

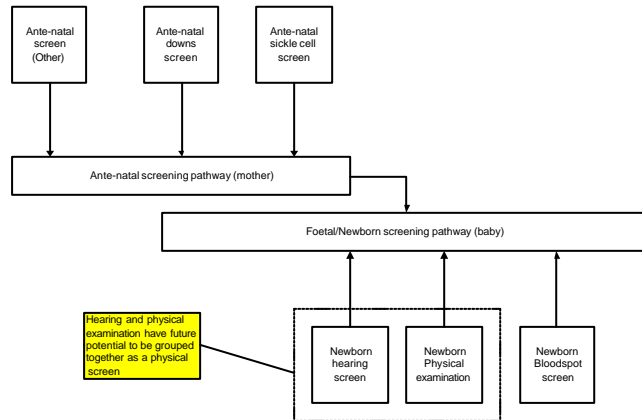
## Fetal, Maternal and Newborn Screening Programmes

- Antenatal
  - Downs (National)
  - Linked antenatal sickle cell and thalassaemia screening programme (National)
  - Infectious diseases
  - Fetal anomaly
- Newborn
  - Bloodspot (National) (PKU, TSH, Sickle, *Cystic Fibrosis*, *MCADD*)
  - Hearing (National)
  - Newborn Physical examination

## Fetal, Maternal and Newborn Screening Programmes

- Person presents for screening as part of another pathway of care
  - Fetal/Maternal: Antenatal
  - Newborn: Triggered by birth
- Data on antenatal screening held in maternity systems and laboratory systems
- Results of antenatal screening tests inform the later treatment of the baby
- Newborn screening depends on information being made available to GPs and Child Health
- Key focus of the antenatal and newborn screening programmes is on delivering co-ordinated care and services to the mother, her fetus and the newborn child.

## Linked view of the antenatal and newborn record



## Fetal, Maternal and Newborn Screening programmes

- Key screening requirements for Connecting for Health
  - Screening pathways integrated with the antenatal/newborn pathways of care
    - Patient care process
    - Data
  - Dependence upon IT functionality for an improved system eg
    - Consent
    - Referral
    - Scheduling (people and equipment)
    - Order Communications and Results Reporting
    - Alerts
    - Antenatal and Newborn data
    - Consultation details
    - Reporting and audit
  - Transfer of screening test results and results between organisations (maternity, labs, ultrasound services etc)
  - NHS number for babies – bar coded label for bloodspot cards
- Strong links with laboratory systems
  - Antenatal screening
  - Newborn screening

## Fetal, Maternal and Newborn Screening programmes

- Other key screening requirements....
  - Support for fetal records
  - Maintenance of family linkages eg links between, mother/father and fetus/baby, mother and baby, fetus and baby
    - Linked antenatal and newborn screening programmes
  - Record the outcome of each pregnancy
  - Access to previous screening results
  - Screening programme audit
    - Monitoring timeliness, effectiveness and coverage against screening programme standards
    - Local audit and national audit
    - QA of the antenatal screening process

## Way Forward

- Fetal, Antenatal and Newborn Screening programmes requirements must be aligned with developments in maternity and child health systems
- Work within the Do Once and Share group for Maternity
- Build on best practice work
- Specific requirements for functionality and data
  - Antenatal Sickle cell and thalassaemia screening programmes OBS in draft
  - Down's audit specification available
  - Infectious diseases data collection form in development
  - Fetal anomaly data requirements under review
  - Newborn Physical examination OBS in draft
  - UK Newborn Screening Programme Standards available, OBS in development
  - Newborn Hearing system well established
  - Screening Programme standards and annual reports in development
- Continue to promote screening programme requirements with Connecting for Health and the LSPs