

Stillbirths, Infant Deaths and Social Deprivation West Midlands 1997-2007/8

(Chapter 13)



Andre Francis – Statistician
Abdel Elsheikh – Data Analyst
Professor Jason Gardosi – Director

West Midlands Perinatal Institute

Tel: 0121 687 3500
Email: jason.gardosi@pi.nhs.uk

West Midlands Key Health Data 2008/9

UNIVERSITY^{of}
BIRMINGHAM
Public Health, Epidemiology and Biostatistics Unit
School of Health and Population Sciences

In collaboration with:

Health Protection Agency
NHS West Midlands
Sandwell Primary Care Trust
West Midlands Cancer Intelligence Unit
West Midlands Perinatal Institute
West Midlands Public Health Observatory

September 2009
Report Number 64

CHAPTER THIRTEEN: STILLBIRTHS, INFANT DEATHS AND SOCIAL DEPRIVATION, WEST MIDLANDS 1997– 2007/8

13.1 Introduction

The Perinatal Institute provides analyses of stillbirth and perinatal / infant mortality rates for each PCT and Acute Trusts in the West Midlands (WM), as well as neonatal activity and mortality reports to neonatal networks and units. Here, we present an update and overview of mortality trends for the region and compare them with national data where available. We also present mortality within the context of the high rates of social deprivation in the West Midlands.

To ensure that this report is as up to date as possible, we include the latest available provisional data, up to 2008 for stillbirths and 2007 for infant deaths.

More detailed analysis of underlying causes will be possible in 2010 with baseline data on all maternities collected from 2009 as part of WM NHS Investing for Health initiative.

DEFINITIONS	
Stillbirth:	A child born from 24 weeks of pregnancy which did not, at any time after being completely expelled from its mother, breathe or show any other signs of life.
Neonatal death:	Death within 28 days following live birth; <i>Early neonatal</i> = first week i.e. day 0 to day 6 incl. <i>Late neonatal</i> = from day 7 to 28.
Perinatal death:	Fetal death from 24 weeks gestation and neonatal death before day 7
Infant death:	Death in the first year following live birth (includes early, late and post-neonatal period).
Corrected rates	(also referred to as 'adjusted' rates) - obtained after exclusion of congenital anomalies and births <22 weeks gestation and/or <500g weight

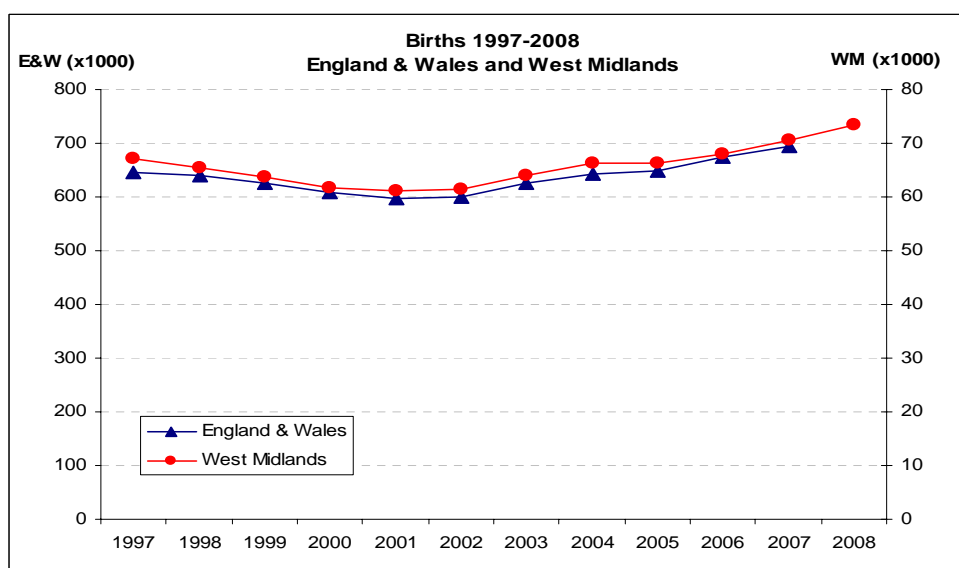
13.2 Births

Table 13.1: Births in West Midlands and England & Wales (E&W), 1997-2007/8

	1997	1998	1999	2000	2001	2002	2003	2004	2005	2006	2007	2008
West Midlands	67,062	65,380	63,852	61,827	61,153	61,417	64,079	66,285	66,351	68,063	70,457	73,454
England & Wales	645,532	639,318	624,862	607,304	597,506	599,279	624,816	643,026	649,094	672,966	693,356	NA*

*Not Available

Figure 13.1: Births in West Midlands and England & Wales, 1997-2007/8



There has been a year-on-year increase since 2002 in birth rates in England & Wales. This is mirrored closely in the West Midlands, where the rise has continued in 2008.

13.3 Stillbirths

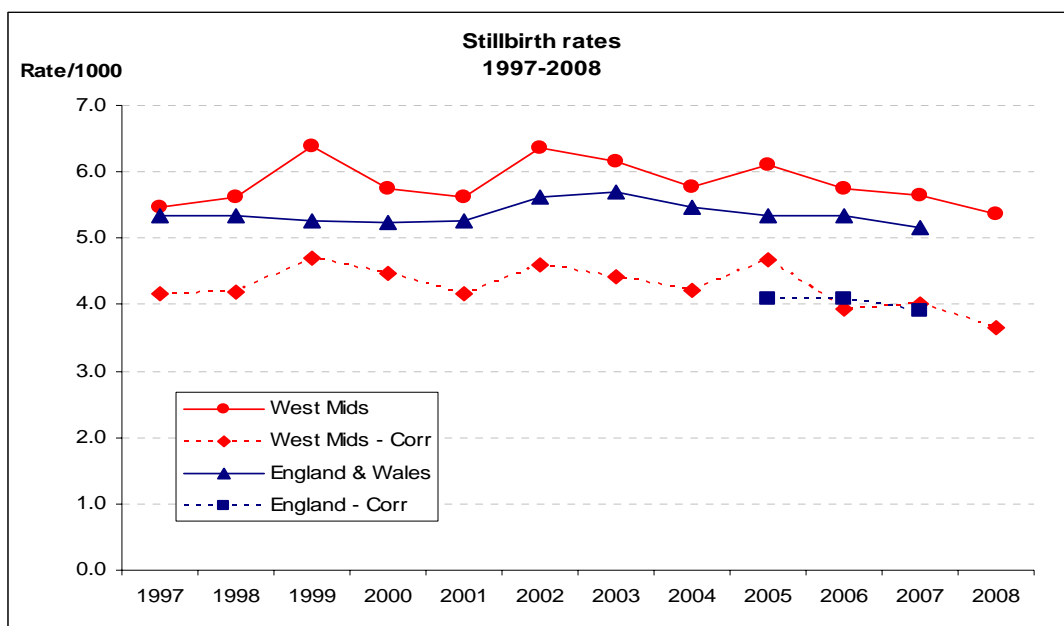
Table 13.2 and Figure 13.2 show the stillbirth rates for the West Midlands (WM) and England & Wales (E&W), overall as well as 'corrected' after exclusion of congenital anomalies and stillbirths <500g weight. (National corrected/adjusted' rates are based on recent CEMACH reports ¹

Table 13.2: Stillbirth rates (per 1000) in West Midlands (WM) and England and Wales (E&W), 1997-2008

	1997	1998	1999	2000	2001	2002	2003	2004	2005	2006	2007	2008
WM	5.5	5.6	6.4	5.7	5.6	6.4	6.2	5.8	6.1	5.7	5.6	5.4
WM corrected	4.2	4.2	4.7	4.5	4.2	4.6	4.4	4.2	4.7	3.9	4.0	3.6
E & W	5.3	5.3	5.3	5.2	5.3	5.6	5.7	5.5	5.4	5.3	5.2	NA*
England corrected	NA	NA	NA	NA	NA	NA	NA	NA	4.1	4.1	3.9	NA*

*Not Available

Figure 13.2: Stillbirth rates in West Midlands and England & Wales, 1997-2008



There appears to be a drop in overall stillbirth rates in the West Midlands and England and Wales in recent years. However they are similar to the rates recorded in 1997.

While the overall West Midlands stillbirth rate continues to be higher than in England & Wales, the corrected rate appears to be similar to those available for England and Wales (2005-7), with the 2008 WM data suggesting a further drop.

13.4 Neonatal Deaths

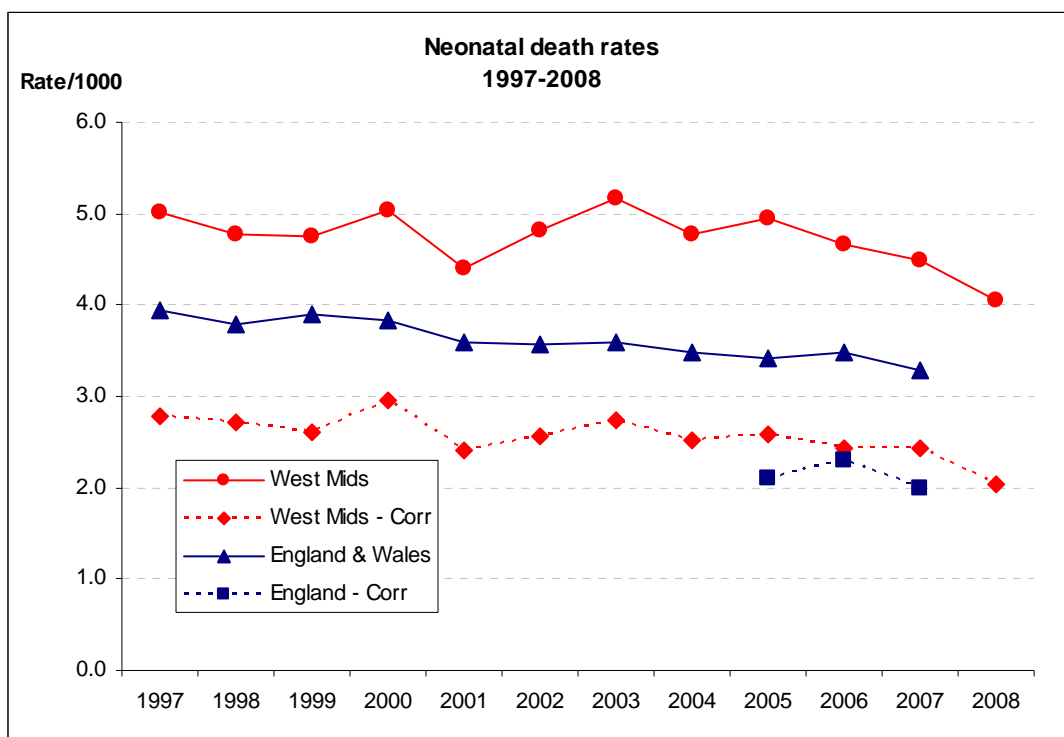
In addition to Infant Deaths (Section, 13.5), we also include here the trend in neonatal deaths (birth to day 28) as CEMACH reports do not include infant mortality rates ¹. The following table and figure compare regional and national data, including corrected/adjusted rates (i.e. after exclusion of congenital anomalies and births <22 weeks gestation and/or <500g weight).

Table 13.3: Neonatal death (rates/1000), West Midlands and England & Wales, 1997-2008

	1997	1998	1999	2000	2001	2002	2003	2004	2005	2006	2007	2008
WM	5.0	4.8	4.8	5.0	4.4	4.8	5.2	4.8	4.9	4.7	4.5	4.1
WM corrected	2.8	2.7	2.6	3.0	2.4	2.6	2.7	2.5	2.6	2.4	2.4	2.0
E&W	3.9	3.8	3.9	3.8	3.6	3.6	3.6	3.5	3.4	3.5	3.3	NA*
England corrected									2.1	2.3	2.0	NA*

*Not Available

Figure 13.3: Neonatal deaths (rates/1000) West Midlands and England and Wales, 1997-2008



Neonatal mortality rates in the West Midlands are substantially higher than those reported for England and Wales. There is a consistent downward trend in the national rate that appears to be mirrored in the West Midlands since 2005.

For corrected rates, the gap is much smaller between the national and regional figures

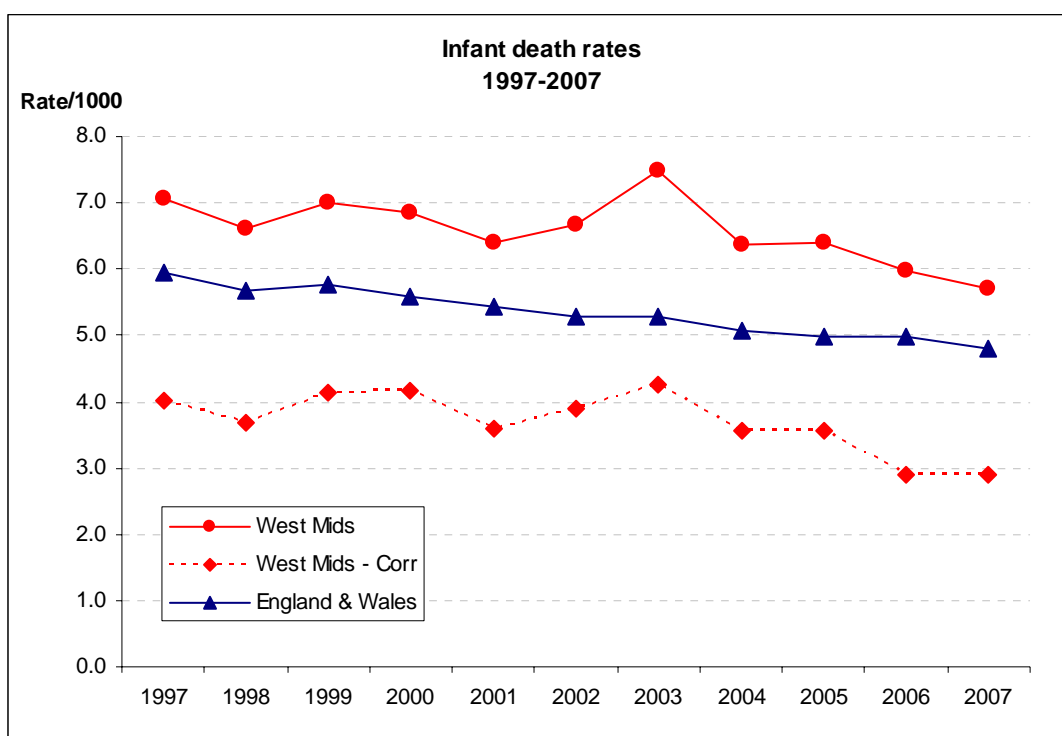
13.5 Infant Deaths

Table 13.4 and Figure 13.4 show infant rates for the West Midlands and England & Wales. Corrected rates (after exclusion of congenital anomalies and births <22 weeks gestation and/or <500g weight) are also shown for the West Midlands. (No national data on corrected infant deaths are available for comparison).

Table 13.4: Infant mortality (rates /1000) in West Midlands (WM) and England and Wales (E&W), 1997-2007

	1997	1998	1999	2000	2001	2002	2003	2004	2005	2006	2007
WM	7.1	6.6	7.0	6.8	6.4	6.7	7.5	6.4	6.4	6.0	5.7
WM corrected	4.0	3.7	4.1	4.2	3.6	3.9	4.3	3.6	3.5	2.9	2.9
E& W	6.0	5.7	5.8	5.6	5.4	5.3	5.3	5.1	5.0	5.0	4.8

Figure 13.4: Infant mortality (rates/1000) West Midlands (WM) and England and Wales (E&W), 1997-2007



There is a continuing drop in overall infant mortality rates in England and Wales, which is reflected in the West Midlands.

While the West Midlands infant mortality continues to be higher than the national rate, about 50% are due to congenital anomalies and pre-viable births, with the corrected rate currently running below 3/1000.

13.6 Classification of Deaths

Stillbirths

The figures below show the main categories of stillbirths according to ReCoDe classification², for all stillbirths and after correction by excluding congenital anomalies and stillbirths <500g.

Figure 13.5: Stillbirths classified by ReCoDe, West Midlands 2003-2008

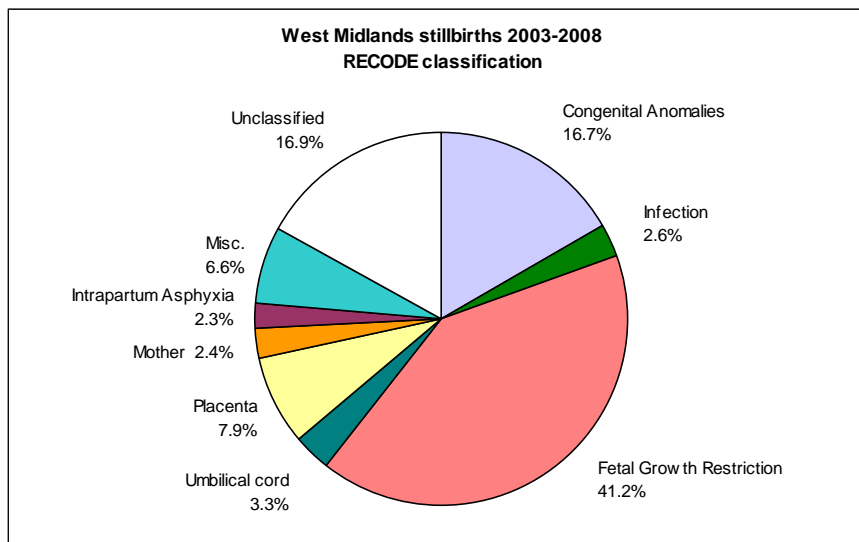
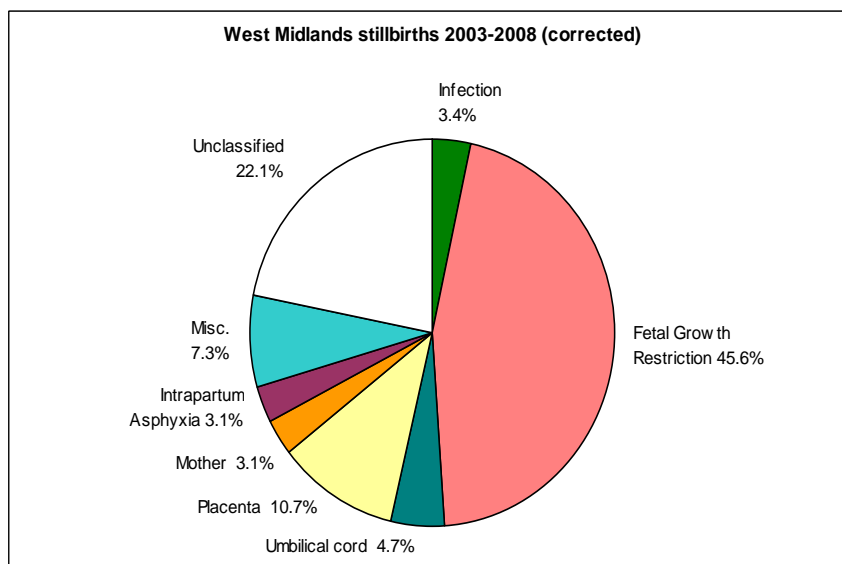


Figure 13.6: Corrected' stillbirths, West Midlands 2003-2008



The main categories of stillbirths are shown. Fetal growth restriction (defined as birthweight <10th customised centile) remains the single largest category (41%). This proportion increases to 46% after exclusion of congenital anomalies and stillbirths <500g, highlighting the importance of ongoing efforts to improve antenatal detection of fetal growth restriction.

Further analysis of stillbirths with congenital anomalies is presented in chapter 14.

Infant Deaths

The figures below show the main categories of infant deaths according to the Fetal and Neonatal Classification³ for all deaths as well as 'corrected', i.e. by excluding congenital anomalies and births <22 weeks and/or <500g.

Figure 13.7: Infant Deaths by Fetal and Neonatal Classification, West Midlands 2003-2007

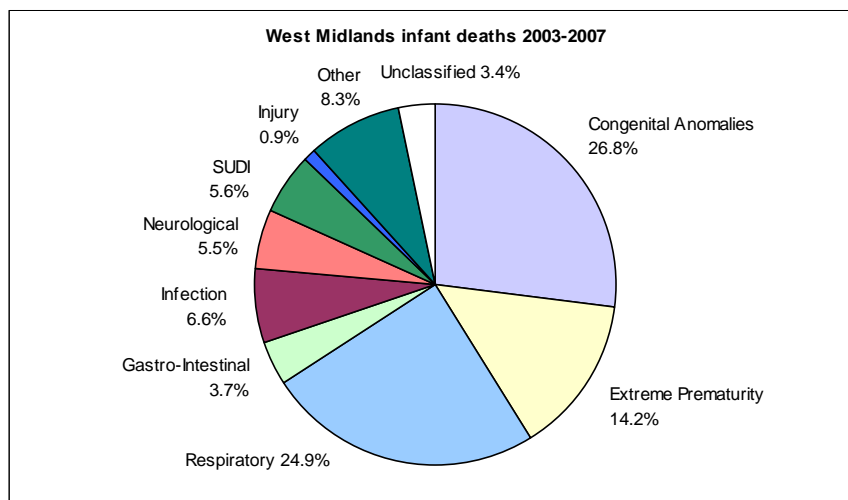
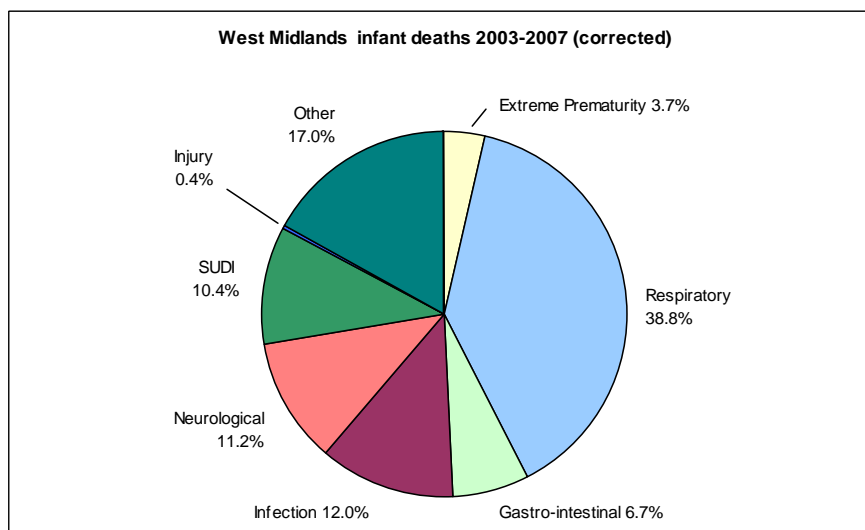


Figure 13.8: 'Corrected' Infant Deaths, West Midlands 2003-2007



The main categories of infant deaths are congenital anomalies, respiratory and extreme prematurity related deaths. Of the 'corrected' deaths, the (prematurity associated) respiratory conditions make the largest contribution (39%).

The Institute is currently working on a new infant death classification system, which can also take the antecedent factors into consideration.

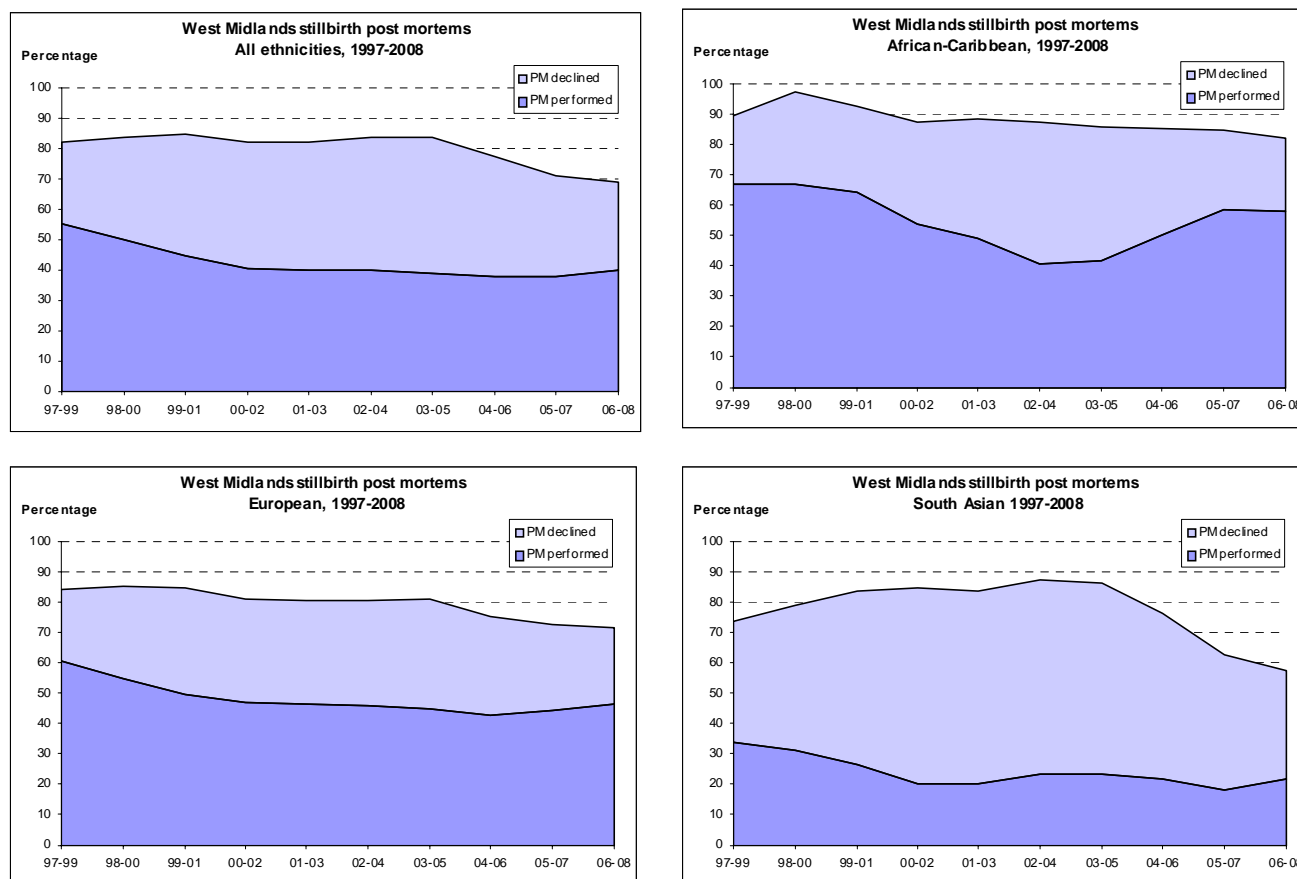
Further analysis of infant deaths with congenital anomalies is presented in chapter 14.

13.7 Post-mortems

The Perinatal Institute collects information about post-mortems for stillbirths and infant deaths, and whether they were offered and accepted or declined.

Post-mortems are an important means of establishing cause of death. Rates have been falling over the past decade and we know from previous analyses that uptake varies around ethnic groups ⁴. In the Figures below, we present the overall proportions of post-mortems offered (top line), declined or performed, for the overall population as well as for the three main ethnic groups in the West Midlands. To avoid variation due to small numbers within subgroups, the data are presented as 3-year moving averages.

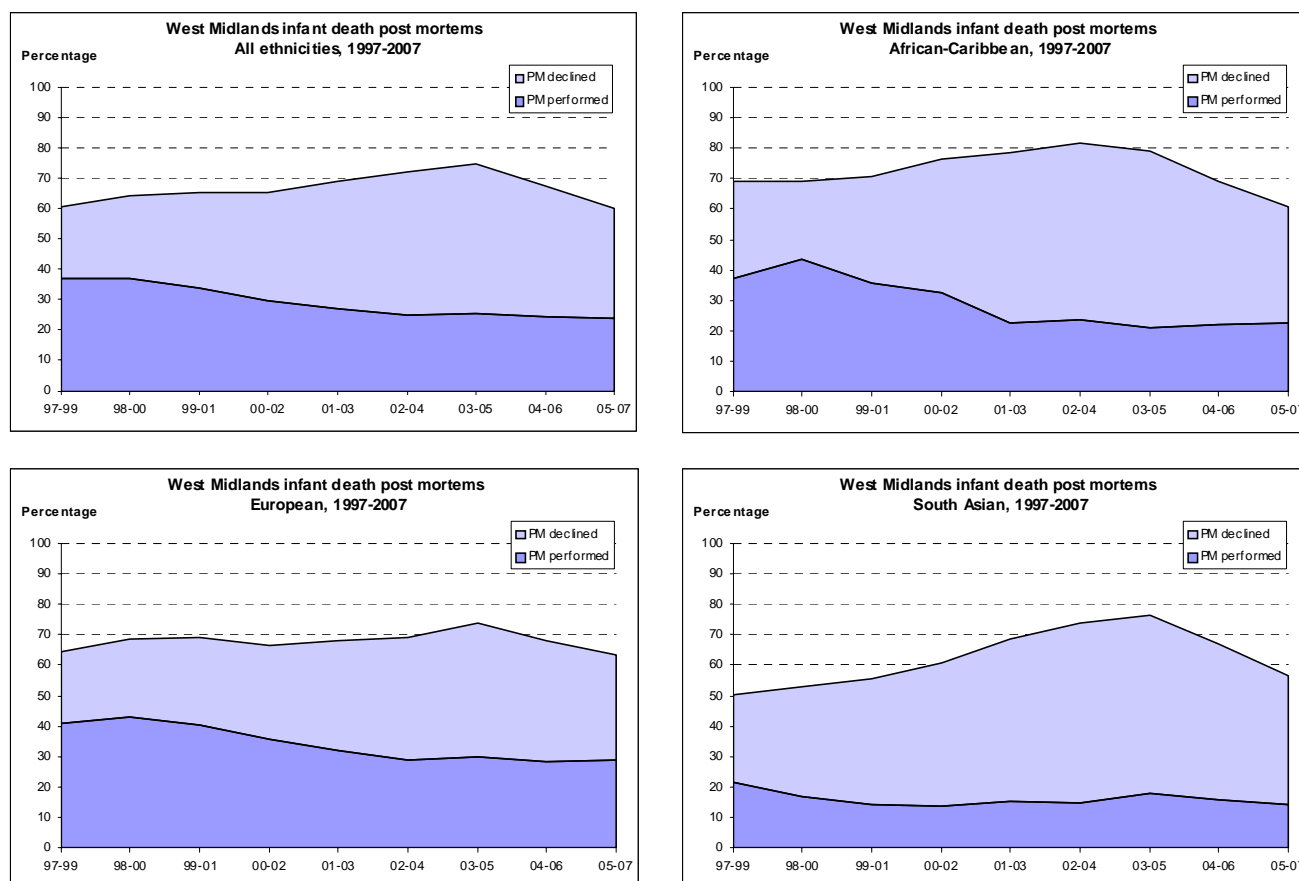
Figure 13.9: Stillbirths with post-mortem 1997-2008



The overall rate of post-mortems for stillbirths for 2006-8 is 40%, which has dropped from 55% in 1997-9.

The overall number of 'offers'/consents sought for post-mortems has decreased since 2004. South Asians have the lowest post-mortem rate. There has also been a recent sharp drop in the rate of offers of post-mortems in this group.

Figure 13.10: Infant deaths with post-mortem, 1997-2007



The rate of post-mortems for infant deaths is lower than those carried out for stillbirths. In part, this appears to be associated with a low 'offer' rate, which has dropped to less than 60% in all subgroups.

The rate of post-mortems for infant deaths was 24% for 2005-7, which has dropped from 37% in 1997-9. There is a higher decline rate, but there also appears to be a drop in the rate of consent sought in recent years, overall and within each subgroup.

As for stillbirths, the lowest post-mortem uptake for infant deaths is in the South Asian group, This is in part due to a high 'decline' rate.

Together, these trends highlight the need for the service to ensure that the appropriate, trained members of staff make every effort to offer and explain to the bereaved parents the value of a post-mortem in the case of a stillbirth or infant death.

13.8 Social Deprivation

The following tables show 3 year moving averages for mortality rates by deprivation, using an area-based score (Index of Multiple Deprivation, IMD 2007). Comparisons are made between the most deprived quintile (Q5) and the other quintiles (Q1-4) in the West Midlands, as well as the available national mortality rates.

Table 13.5: Stillbirth by IMD Quintile: 3-year moving average

	97-99	98-00	99-01	00-02	01-03	02-04	03-05	04-06	05-07	06-08
West Midlands	5.8	5.9	5.9	5.9	6.0	6.1	6.0	5.9	5.8	5.6
IMD Q5	6.9	6.9	7.0	7.0	7.6	7.9	7.8	7.3	7.2	7.0
IMD 1-4	5.2	5.3	5.3	5.2	5.1	4.9	4.8	4.9	4.9	4.6
England & Wales	5.3	5.3	5.2	5.4	5.5	5.6	5.5	5.4	5.3	NA

Table 13.6: Perinatal Mortality by IMD Quintile: 3-year moving average

	97-99	98-00	99-01	00-02	01-03	02-04	03-05	04-06	05-07	06-08
West Midlands	9.8	9.8	9.7	9.7	9.9	10.0	10.0	9.7	9.6	9.1
IMD Q5	11.6	11.6	11.9	12.2	13.0	13.4	13.4	12.4	12.1	11.5
IMD Q1-4	8.7	8.7	8.4	8.1	7.9	7.8	7.9	8.0	8.0	7.6
England & Wales	8.3	8.2	8.1	8.1	8.2	8.3	8.2	8.0	7.9	NA

Table 13.7: Infant Mortality by IMD Quintile: 3-year moving average

	97-99	98-00	99-01	00-02	01-03	02-04	03-05	04-06	05-07
West Midlands	6.9	6.8	6.8	6.6	6.9	6.8	6.7	6.3	6.0
IMD Q5	8.9	8.9	9.1	9.4	9.8	9.6	9.2	8.2	7.7
IMD Q1-4	5.7	5.6	5.3	4.9	5.0	5.1	5.1	5.0	4.9
England & Wales	5.8	5.7	5.6	5.4	5.3	5.2	5.1	5.0	4.9

In each category, mortality rates are consistently higher in WM than in England and Wales. This is mainly due to the elevated mortality rates in Q5, while rates in Q1-4 are similar or below the *overall* national average (NB: similar breakdown of national data is not available for comparison).

Q5 mortality rates are consistently higher in each mortality category, with no evidence of reduction in the gap since 1997-9. For the last triennium, the ratio of Q5 to Q1-4 was

Stillbirths: OR 1.5 (CI 1.4-1.7)
 Infant deaths: OR 1.6 (CI 1.4-1.8)

In the following Figures 13.11 and 13.12, average stillbirth and infant mortality rates are plotted against the IMD (2007) scores for the 17 West Midlands PCTs.

Figure 13.11: Deprivation and stillbirth in West Midlands PCTs, 2003-2008

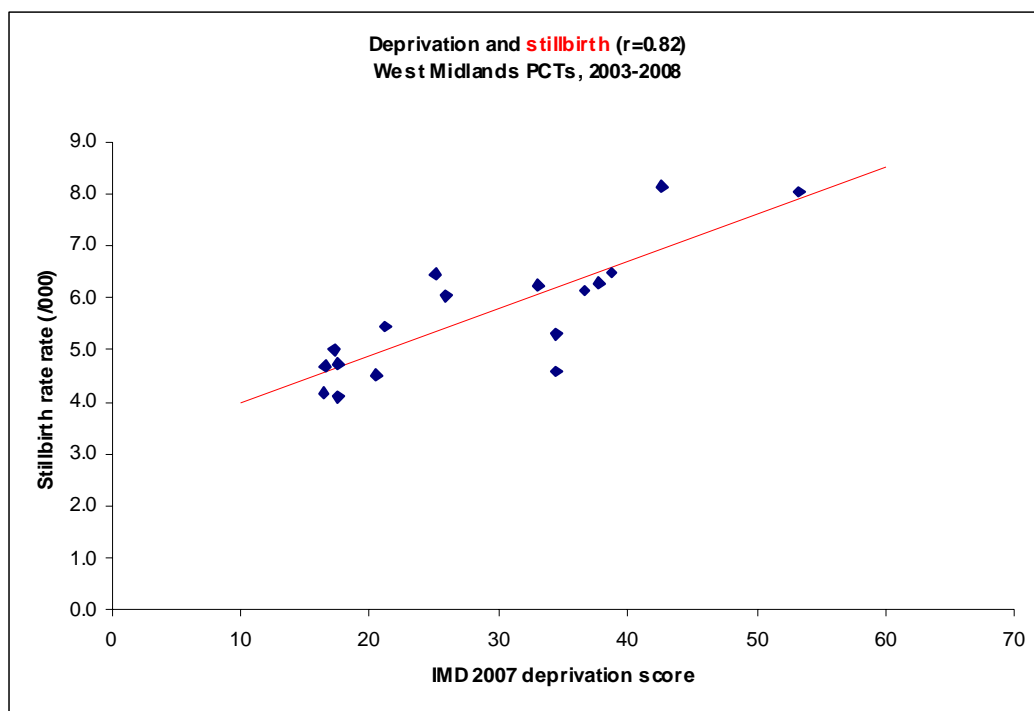
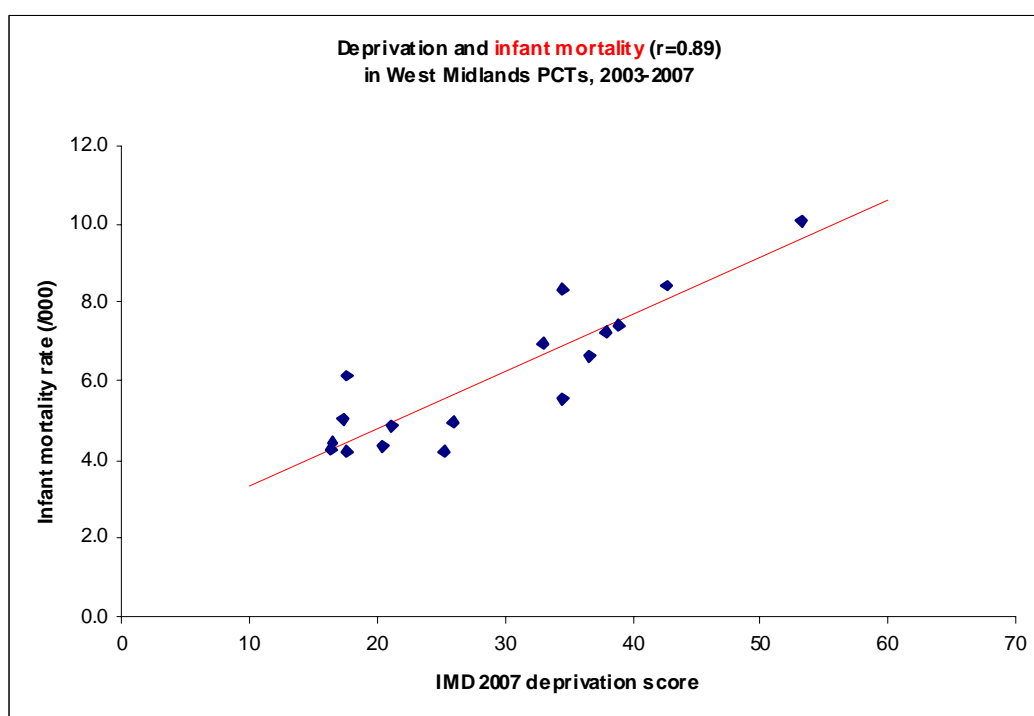


Figure 13.12: Deprivation and infant deaths in West Midlands PCTs, 2003-2007



The graphs show a strong correlation between PCTs' IMD scores and their respective stillbirth and infant mortality rates. For stillbirths, the correlation was $R = 0.82$, $p < 0.01$ and for infant deaths $R = 0.89$, $p < 0.01$.

This association highlights the importance of the public health role in efforts to reduce perinatal and infant mortality. More in depth assessment will be possible after the availability of baseline maternity information from the regional data collection commenced in 2009.

The Perinatal Institute provides mortality reports to each WM PCT which include stillbirth and perinatal / infant mortality analyses, put in the context of the background level of deprivation.

References

1. Confidential Enquiry into Maternal and Child Health (CEMACH) Perinatal Mortality 2007: UK. CEMACH, London 2009
2. Gardosi et al. Classification of stillbirths by relevant conditions at death BMJ 2005 331:1113-7.
3. Hey et al. Classifying perinatal death: fetal and neonatal factors. BJOG 1986;93:1213-23.
4. Perinatal Update 2006: Perinatal Institute, www.pi.nhs.uk/pnm/Update2006.pdf

Data Sources

- WM Perinatal Death Notification;
- ONS VS Tables;
- CEMACH 2005-7 Reports;
- ADBE; IMD 2007 (DPM);
- Births: Annual Birth Extract (ONS) & WM unit data for 2008.

13.9 Stillbirth, Perinatal & Infant Death Rates, West Midlands PCTs and LAs 1997-2007/08

Table 13.8. The table lists all Primary Care Trusts (PCT), Local Authorities (LA) and Wards in the West Midlands. It shows the average score of the 2007 Index of Multiple Deprivation (IMD, weighted according to number of births and households), proportion of births in the most deprived areas (Quintile 5), and average annual births for 1997-2007 and 2007. Rates (per 1000) for stillbirths, perinatal and infant deaths are presented for each PCT and LA, but not for Wards because of small numbers. **NB** Stillbirth and perinatal death rates for 2008, and infant death rates for 2007 are provisional.

	IMD Score	BIRTHS			STILLBIRTH			PERINATAL DEATH			INFANT DEATH		
		% in Q5	avg / yr 97-07	2007	97- 02	03- 07	2008	97- 02	03- 07	2008	97- 02	03- 07	2007
WEST MIDLANDS	29.9	39	65,084	70,457	5.9	5.9	5.4	9.8	9.8	8.7	6.8	6.4	5.7
Birmingham LA (BEN, HoB, South)	44.7	70	15,378	17,092	7.0	7.8	6.7	11.9	13.1	10.6	8.8	8.6	7.4
Birmingham East and North PCT	45.1	73	6,022	6,781	6.8	8.3	7.2	11.7	13.6	12.2	9.0	8.4	7.9
Acocks Green	40.5	71	399	488									
Bordesley Green	54.6	100	791	856									
Erdington	41.4	56	303	330									
Hodge Hill	46.2	69	392	460									
Kingstanding	55.9	96	347	399									
Shard End	51.9	96	381	414									
Sheldon	34.7	44	249	237									
South Yardley	46.5	81	470	557									
Stechford & Yardley North	45.4	82	355	440									
Stockland Green	42.6	85	303	365									
Sutton Four Oaks	10.5	0	197	240									
Sutton New Hall	13.0	0	213	223									
Sutton Trinity	19.5	11	238	262									
Sutton Vesey	13.5	0	209	231									
Tyburn	46.2	79	311	397									
Washwood Heath	65.1	100	864	882									
Heart of Birmingham Teaching PCT	52.8	86	5,241	5,710	7.8	8.5	5.9	13.3	14.4	9.4	10.0	10.1	8.7
Aston	57.6	100	709	769									
Handsworth Wood	35.8	56	353	401									
Ladywood	53.5	84	244	296									
Lozells & East H&sworth	59.2	100	697	733									
Nechells	62.7	94	656	724									
Oscott	29.0	30	296	343									
Perry Barr	30.5	23	306	324									
Soho	56.4	97	560	607									
Sparkbrook	60.9	100	805	830									
Springfield	47.6	91	615	683									
South Birmingham PCT	34.1	45	4,115	4,601	6.3	6.1	7.1	10.7	10.8	9.8	6.9	6.9	5.0
Bartley Green	40.3	65	358	359									
Billesley	38.4	74	318	371									
Bournville	27.7	25	305	330									
Brandwood	37.0	47	297	340									
Edgbaston	30.0	32	190	223									
Hall Green	21.6	9	303	380									
Harborne	24.7	14	242	279									
Kings Norton	43.3	57	331	362									
Longbridge	38.0	61	351	382									
Moseley & Kings Heath	35.3	44	333	358									
Northfield	32.0	33	306	314									
Quinton	35.3	49	304	361									
Selly Oak	21.1	4	170	172									
Weoley	40.8	72	308	370									
Coventry Teaching PCT/LA	32.6	42	3,879	4,388	6.2	4.4	5.5	11.0	7.6	9.0	8.0	5.5	4.6
Bablake	17.1	0	145	146									
Binley and Willenhall	45.7	60	241	275									
Cheylesmore	20.7	0	164	178									
Earlsdon	10.3	0	124	106									
Foleshill	50.4	100	410	463									
Henley	44.1	51	291	322									
Holbrook	28.8	32	222	220									
Longford	37.2	49	254	285									
Lower Stoke	34.9	28	246	280									
Radford	33.8	47	241	347									
Sherbourne	45.9	89	287	405									
St Michael's	20.7	21	191	214									
Upper Stoke	34.5	50	245	301									
Wainbody	8.6	0	92	94									
Westwood	25.9	21	194	205									
Whoberley	17.1	0	165	155									
Woodlands	22.3	26	168	183									
Wyken	20.6	11	200	209									
Dudley PCT/LA	27.2	31	3,525	3,608	6.1	5.9	6.6	8.8	8.5	8.8	5.6	5.0	3.9
Amblecote	15.3	9	156	169									
Belle Vale	26.7	22	154	166									
Brierley Hill	34.7	61	203	197									
Brockmoor & Pensnett	35.5	48	171	145									
Castle & Priory	40.4	65	216	219									
Coseley East	28.8	16	153	155									
Cradley & Foxcote	28.8	18	183	188									
Gornal	24.1	27	129	119									
Halesowen North	22.7	18	139	149									
Halesowen South	12.1	1	85	95									
Hayley Green & Cradley South	18.9	17	98	118									
Kingswinford North & Wall Heath	9.6	0	103	94									
Kingswinford South	13.5	0	97	95									
Lye & Wollescote	29.7	27	181	183									
Netherton; Woodside & St Andrews	38.4	61	195	211									
Norton	11.7	0	95	104									
Pedmore & Stourbridge East	17.7	22	100	112									

	IMD Score	BIRTHS			STILLBIRTH			PERINATAL DEATH			INFANT DEATH		
		% in Q5	avg / yr		Rates			Rates			Rates		
			97-07	2007	97-02	03-07	2008	97-02	03-07	2008	97-02	03-07	2007
Quarry Bank & Dudley Wood	29.6	29	156	174									
St James's	32.5	58	175	179									
St Thomas's	43.5	72	247	262									
Sedgley	18.6	0	95	90									
Upper Gornal & Woodsetton	27.0	17	134	141									
Wollaston & Stourbridge Town	19.7	12	127	122									
Wordsley	14.3	0	134	121									
Herefordshire PCT/LA	19.2	9	1,708	1,825	4.9	4.8	1.1	7.1	6.9	3.7	3.8	4.2	1.7
Aylestone	20.0	0	52	76									
Backbury	15.8	0	25	29									
Belmont	29.9	55	169	175									
Bircher	13.6	0	17	13									
Bringsty	16.2	0	21	15									
Bromyard	20.3	0	57	59									
Burghill; Holmer & Lyde	11.8	0	23	30									
Castle	17.8	0	21	24									
Central	26.6	0	29	43									
Creddenhill	16.1	0	34	29									
Frome	19.3	0	34	30									
Golden Cross with Weobley	18.7	0	25	27									
Golden Valley North	19.5	0	21	14									
Golden Valley South	17.2	0	24	22									
Hagley	12.2	0	35	33									
Hampton Court	17.8	0	20	31									
Hollington	18.3	0	16	19									
Hope End	13.1	0	37	32									
Kerne Bridge	14.4	0	27	27									
Kington Town	18.6	0	30	39									
Ledbury	11.8	0	95	98									
Leominster North	25.8	35	70	61									
Leominster South	24.5	0	55	68									
Llangarron	16.2	0	26	29									
Mortimer	19.8	0	29	25									
Old Gore	17.1	0	24	17									
Pembridge & Lyonshall w Titley	17.6	0	26	22									
Penyard	16.2	0	26	28									
Pontrilas	17.0	0	25	22									
Ross-on-Wye East	13.0	0	35	40									
Ross-on-Wye West	18.0	0	61	69									
St Martins & Hinton	24.3	22	146	187									
St Nicholas	15.1	0	67	79									
Stoney Street	17.0	0	23	26									
Sutton Walls	12.2	0	27	28									
Three Elms	18.4	0	116	126									
Tupsley	12.0	0	68	68									
Upton	17.4	0	22	19									
Valletts	19.9	0	28	30									
Wormsley Ridge	16.5	0	20	16									
North Staffordshire PCT	20.1	15	2,020	2,059	4.2	4.9	7.9	7.6	8.2	14.5	5.2	4.9	8.3
Newcastle-under-Lyme LA	21.6	20	1,220	1,238	4.8	4.7	9.3	7.6	8.6	19.3	5.0	5.9	11.4
Audley & Bignall End	17.0	0	55	57									
Bradwell	22.0	0	66	67									
Butt Lane	27.4	25	59	65									
Chesterton	27.0	49	109	86									
Clayton	16.3	0	31	36									
Cross Heath	37.8	59	76	79									
Halmerend	15.8	0	30	36									
Holditch	33.2	71	56	64									
Keele	5.0	0	9	11									
Kidsgrove	19.7	22	82	77									
Knutton & Silverdale	38.3	72	54	70									
Loggerheads & Whitmore	11.3	0	51	51									
Madeley	11.9	0	40	36									
May Bank	11.4	0	61	54									
Newchapel	15.6	0	36	44									
Porthill	15.1	0	46	46									
Ravenscliffe	15.8	0	41	49									
Seabridge	13.1	0	50	39									
Silverdale & Parksite	28.8	52	40	44									
Talke	23.1	0	32	30									
Thistleberry	20.9	0	46	47									
Town	29.0	33	43	46									
Westlands	8.1	0	43	43									
Wolstanton	18.7	0	65	61									
Staffordshire Moorlands LA	17.4	6	847	872	3.1	5.0	5.5	7.6	7.1	6.6	5.7	3.1	3.4
Alton	11.2	0	9	10									
Biddulph East	29.3	47	78	86									
Biddulph Moor	9.1	0	13	11									
Biddulph North	9.0	0	38	38									
Biddulph South	15.2	0	9	11									
Biddulph West	18.0	0	50	62									
Cellarhead	9.8	0	28	29									
Cheadle North East	24.4	0	39	37									
Cheadle South East	18.0	0	36	23									
Cheadle West	15.1	0	45	47									
Checkley	10.6	0	49	57									
Cheddleton	13.3	0	44	52									
Churnet	18.1	0	30	31									
Dane	22.8	0	14	11									
Forsbrook	12.8	0	35	35									
Hamps Valley	12.5	0	16	15									
Horton	13.8	0	13	10									
Ipstones	16.0	0	12	5									

	IMD Score	BIRTHS			STILLBIRTH			PERINATAL DEATH			INFANT DEATH		
		% in Q5	avg / yr 97-07	2007	97-02	03-07	2008	97-02	03-07	2008	97-02	03-07	2007
Leek East	19.4	0	49	46									
Leek North	29.3	26	58	67									
Leek South	21.6	0	54	76									
Leek West	12.6	0	42	31									
Manifold	19.9	0	14	5									
Werrington	8.1	0	24	26									
Sandwell PCT/LA	39.5	65	4,005	4,433	7.0	6.1	6.9	11.1	10.8	11.0	7.7	7.3	6.1
Abbey	21.4	0	146	176									
Blackheath	34.0	70	148	157									
Bristnall	33.1	46	136	141									
Charlemont with Grove Vale	31.0	34	129	136									
Cradley Heath & Old Hill	37.8	61	162	194									
Friar Park	46.6	81	140	179									
Great Barr with Yew Tree	24.2	0	145	150									
Great Bridge	37.8	61	167	209									
Greets Green & Lyng	48.9	100	183	185									
Hateley Heath	42.9	86	161	174									
Langley	37.7	68	159	177									
Newton	26.6	22	130	126									
Old Warley	25.8	36	115	119									
Oldbury	36.6	62	195	199									
Princes End	48.6	86	214	216									
Rowley	34.9	59	146	158									
St Pauls	46.8	99	260	307									
Smethwick	42.4	73	177	204									
Soho & Victoria	55.2	100	279	322									
Tipton Green	39.2	60	182	206									
Tividale	37.0	66	171	200									
Wednesbury North	39.4	75	140	168									
Wednesbury South	40.3	49	143	141									
West Bromwich Central	47.0	81	181	189									
Shropshire PCT	17.2	3	2,829	2,878	4.3	4.5	5.7	6.8	6.6	7.0	4.7	4.4	3.8
Bridgnorth LA	13.7	0	464	443	4.8	3.2	4.3	6.6	4.5	4.3	4.2	2.3	0.0
Albrighton South	15.6	0	28	24									
Alveley	12.4	0	24	25									
Bridgnorth Castle	7.4	0	24	26									
Bridgnorth East	11.6	0	29	30									
Bridgnorth Morfe	14.6	0	29	35									
Bridgnorth West	15.4	0	26	23									
Broseley East	15.9	0	24	17									
Broseley West	15.3	0	25	34									
Claverley	11.0	0	12	9									
Ditton Priors	18.7	0	15	15									
Donington & Albrighton North	7.5	0	36	23									
Glazeley	16.8	0	15	19									
Harrington	16.7	0	12	16									
Highley	17.8	0	36	32									
Morville	13.5	0	14	12									
Much Wenlock	12.8	0	26	26									
Shifnal Idsall	15.8	0	24	19									
Shifnal Manor	7.3	0	20	19									
Shifnal Rural	13.0	0	17	21									
Stottesdon	19.2	0	13	6									
Worfield	16.2	0	12	12									
North Shropshire LA	18.0	0	591	585	2.5	4.1	6.6	5.4	6.4	8.2	4.5	5.4	5.1
Baschurch	10.5	0	12	17									
Clive & Myddle	13.2	0	23	28									
Cockshutt	13.7	0	11	10									
Dudleston Heath	20.6	0	13	16									
Ellesmere & Welshampton	17.4	0	37	33									
Hinstock	17.7	0	27	23									
Hodnet	18.9	0	28	25									
Hordley;Tetchill & Lyneal	18.2	0	10	6									
Market Drayton East	25.8	0	41	45									
Market Drayton North	14.3	0	54	74									
Market Drayton South	19.4	0	32	33									
Prees	20.1	0	25	23									
Shavington	21.6	0	10	14									
Shawbury	10.6	0	31	24									
Sutton	16.3	0	38	32									
Wem East	16.6	0	24	22									
Wem Rural	19.4	0	13	10									
Wem West	15.4	0	19	15									
Whitchurch North	23.5	0	33	35									
Whitchurch Rural	19.2	0	11	10									
Whitchurch South	20.6	0	33	34									
Whitchurch West	20.9	0	40	40									
Whixhall	19.4	0	11	5									
Woore	13.0	0	13	11									
Oswestry LA	18.2	3	354	397	3.4	5.9	2.4	7.4	8.1	2.4	7.4	4.3	0.0
Cabin Lane	10.9	0	36	33									
Carreg Llwyd	21.4	0	37	42									
Castle	21.9	48	25	30									
Gatacre	24.8	0	35	35									
Gobowen	24.0	0	32	29									
Kinnerley	16.2	0	12	20									
Llanyblodwel & Pant	16.7	0	16	20									
Maserfield	8.8	0	18	26									
Ruyton & West Felton	13.5	0	29	22									
St. Martin's	16.6	0	27	36									
Sweeney & Trefonen	15.7	0	34	53									
Weston Rhyn	19.2	0	26	30									
Whittington	18.2	0	26	21									

	IMD Score	BIRTHS			STILLBIRTH			PERINATAL DEATH			INFANT DEATH		
		% in Q5	avg / yr	2007	Rates			Rates			Rates		
			97-07		97-02	03-07	2008	97-02	03-07	2008	97-02	03-07	2007
Shrewsbury and Atcham LA	17.9	7	1,027	1,083	6.2	5.2	5.3	8.1	8.0	7.1	4.6	5.1	5.6
Bagley	15.0	0	70	66									
Battlefield & Heathgates	21.4	0	71	81									
Bayston Hill	8.1	0	41	46									
Belle Vue	15.7	0	45	52									
Bowbrook	13.5	0	71	54									
Castlefields & Quarry	24.1	0	55	71									
Column	13.1	0	28	36									
Condover	13.3	0	20	21									
Copthorne	7.3	0	40	45									
Hanwood & Longden	16.8	0	18	15									
Harlescott	29.8	43	76	78									
Haughmond & Attingham	21.1	0	24	25									
Lawley	15.9	0	22	19									
Meole Brace	18.9	37	50	42									
Monkmoor	24.9	31	65	68									
Montford	13.5	0	22	21									
Pimhill	14.5	0	17	18									
Porthill	11.6	0	42	52									
Rea Valley	12.4	0	46	47									
Rowton	18.4	0	31	35									
Severn Valley	20.4	0	15	22									
Sundorne	22.7	0	64	61									
Sutton & Reabrook	15.5	0	37	45									
Underdale	18.3	0	60	63									
South Shropshire LA	17.1	0	372	354	2.6	3.4	10.9	5.6	4.5	13.6	3.9	3.9	5.7
Apedale	18.0	0	9	7									
Bishop's Castle with Onny Valley	18.1	0	20	16									
Bitterley with Stoke St Milborough	22.4	0	12	14									
Bucknell	17.1	0	9	6									
Burford	13.8	0	15	9									
Caynham with Ashford	13.4	0	9	4									
Chirbury	17.6	0	9	4									
Church Stretton North	7.5	0	10	6									
Church Stretton South	8.8	0	16	15									
Clee	19.0	0	21	21									
Cleobury Mortimer	11.3	0	29	28									
Clun	19.4	0	8	7									
Clun Forest	19.4	0	7	7									
Corve Valley	18.6	0	6	11									
Kemp Valley	20.5	0	10	12									
Ludlow Henley	26.4	0	32	33									
Ludlow St Laurence's	19.4	0	14	16									
Ludlow St Peter's	16.2	0	28	21									
Ludlow Sheet with Ludford	12.6	0	38	40									
Stokesay	19.9	0	31	42									
Upper Corvedale	19.3	0	10	11									
Wistanstow with Hopesay	16.6	0	12	9									
Worthen	17.6	0	18	15									
Cambrian	21.8	0	21	16									
Solihull PCT/LA	20.0	24	2,072	2,160	6.0	4.3	5.3	9.3	6.9	10.2	4.7	4.4	4.6
Bickenhill	22.7	19	132	128									
Blythe	5.4	0	132	158									
Castle Bromwich	16.9	0	75	67									
Chelmsley Wood	43.8	87	203	235									
Dorridge & Hockley Heath	4.2	0	94	103									
Elmdon	13.3	0	117	108									
Kingshurst & Fordbridge	42.5	80	196	211									
Knowle	5.6	0	72	56									
Lyndon	16.1	0	138	154									
Meriden	8.1	0	102	98									
Olton	10.3	0	106	114									
St Alphege	4.5	0	100	81									
Shirley East	9.0	0	109	114									
Shirley South	9.5	0	94	89									
Shirley West	12.3	0	123	127									
Silhill	9.5	0	89	94									
Smith's Wood	41.9	77	192	223									
South Staffordshire PCT	17.5	12	6,425	6,914	5.8	4.9	4.2	9.2	8.9	6.9	5.7	6.1	6.0
Cannock Chase LA	21.5	16	1,109	1,126	5.9	4.3	0.0	8.9	8.6	0.9	4.6	5.9	7.1
Brereton & Ravenhill	23.9	32	77	76									
Cannock East	30.1	50	86	88									
Cannock North	35.7	45	91	85									
Cannock South	30.4	25	89	91									
Cannock West	16.4	0	57	71									
Etching Hill & The Heath	21.5	30	73	60									
Hagley	24.0	0	53	63									
Hawks Green	8.0	0	101	92									
Heath Hayes East & Wimblebury	14.1	0	76	94									
Hednesford Green Heath	13.4	0	56	61									
Hednesford North	27.1	20	93	91									
Hednesford South	12.5	0	55	51									
Norton Canes	22.2	0	80	88									
Rawnsley	18.2	0	54	43									
Western Springs	17.3	0	69	72									
East Staffordshire LA	21.3	25	1,253	1,405	5.1	5.1	8.9	7.7	10.2	12.3	4.8	7.9	6.4
Abbey	12.5	0	24	28									
Anglesey	33.4	52	123	162									
Bagots	8.9	0	19	17									
Branston	9.2	0	92	91									
Brizlincote	6.7	0	55	45									
Burton	37.5	100	41	57									
Churnet	15.9	0	28	28									

	IMD Score	BIRTHS			STILLBIRTH			PERINATAL DEATH			INFANT DEATH		
		% in Q5	avg / yr 97-07	2007	Rates			Rates			Rates		
					97-02	03-07	2008	97-02	03-07	2008	97-02	03-07	2007
Crown	12.9	0	22	19									
Eton Park	36.1	55	98	114									
Heath	17.5	0	66	70									
Horninglow	25.6	46	87	107									
Needwood	8.3	0	41	34									
Rolleston on Dove	6.5	0	29	51									
Shobnall	36.6	60	99	119									
Stapenhill	32.1	40	86	115									
Stretton	9.3	0	79	73									
Town	11.0	0	79	74									
Tutbury & Outwoods	11.2	0	53	57									
Weaver	13.5	0	20	15									
Winshill	23.2	25	95	107									
Yoxall	7.6	0	19	22									
Lichfield LA	13.0	0	943	1,016	4.0	4.9	4.7	8.2	7.8	9.4	6.8	6.0	3.0
All Saints	8.6	0	31	26									
Alrewas & Fradley	8.1	0	59	78									
Armitage with Handsacre	12.3	0	63	55									
Boley Park	5.2	0	46	37									
Boney Hay	17.9	0	32	28									
Bourne Vale	15.9	0	17	11									
Burntwood Central	9.6	0	28	18									
Chadsmead	26.9	0	51	51									
Chase Terrace	9.2	0	57	54									
Chasetown	24.4	0	37	43									
Colton & Mavesyn Ridware	12.8	0	14	16									
Curborough	21.9	0	54	48									
Fazeley	19.1	0	49	60									
Hammerwich	11.0	0	22	24									
Highfield	6.5	0	34	53									
King's Bromley	9.3	0	13	14									
Leomansley	9.4	0	56	106									
Little Aston	5.3	0	20	20									
Longdon	8.9	0	10	9									
Mease & Tame	10.8	0	32	31									
St John's	7.7	0	40	67									
Shenstone	10.6	0	27	21									
Stonnall	7.9	0	14	9									
Stowe	14.8	0	43	44									
Summerfield	17.9	0	56	57									
Whittington	7.5	0	40	36									
South Staffordshire LA	12.5	0	940	925	6.8	4.8	1.0	10.1	8.1	1.0	5.8	4.6	5.4
Bilbrook	14.2	0	40	57									
Brewood & Coven	10.7	0	47	49									
Cheslyn Hay North & Saredon	13.4	0	39	36									
Cheslyn Hay South	9.3	0	43	36									
Codsall North	10.2	0	34	41									
Codsall South	5.7	0	26	31									
Essington	18.8	0	44	43									
Featherstone & Shareshill	17.6	0	60	48									
Great Wyrley Landywood	15.7	0	49	42									
Great Wyrley Town	15.6	0	47	44									
Himley & Swindon	14.6	0	11	11									
Huntington & Hatherton	23.2	0	62	66									
Kinver	9.6	0	46	47									
Pattingham & Patshull	6.8	0	16	12									
Penkridge North East & Acton Trussell	10.4	0	22	23									
Penkridge South East	8.8	0	49	49									
Penkridge West	11.9	0	19	15									
Perton Dippons	8.0	0	18	13									
Perton East	2.5	0	23	29									
Perton Lakeside	9.4	0	73	58									
Trysull & Seisdon	10.8	0	14	16									
Wheaton Aston; Bishopswood & Lapley	12.1	0	31	32									
Wombourne North & Lower Penn	7.8	0	48	53									
Wombourne South East	7.0	0	25	27									
Wombourne South West	16.9	0	55	47									
Stafford LA	14.2	5	1,223	1,426	5.2	5.8	4.0	9.5	10.2	6.7	6.4	6.0	6.4
Barlaston & Oulton	15.4	0	26	35									
Baswich	3.2	0	31	28									
Chartley	8.7	0	12	9									
Church Eaton	10.6	0	17	20									
Common	17.1	0	55	74									
Coton	15.6	0	71	98									
Eccleshall	11.7	0	51	55									
Forebridge	19.6	0	47	60									
Fulford	12.7	0	37	50									
Gnosall & Woodseaves	9.5	0	59	65									
Haywood & Hixon	7.3	0	54	50									
Highfields & Western Downs	25.1	30	90	93									
Holmcroft	18.5	0	74	96									
Littleworth	13.9	0	63	74									
Manor	21.2	0	64	82									
Milford	7.2	0	31	44									
Milwich	15.4	0	14	19									
Penkside	26.1	55	55	83									
Rowley	8.1	0	45	48									
St. Michael's	8.1	0	67	65									
Seighford	9.7	0	21	18									
Stonefield & Christchurch	12.1	0	53	59									
Swynnerton	10.2	0	33	35									
Tillington	20.0	0	53	64									
Walton	12.5	0	48	50									
Weeping Cross	3.0	0	52	52									

	IMD Score	BIRTHS			STILLBIRTH			PERINATAL DEATH			INFANT DEATH		
		% in Q5	avg / yr	2007	Rates			Rates			Rates		
			97-07		97-02	03-07	2008	97-02	03-07	2008	97-02	03-07	2007
Tamworth LA	21.1	23	957	1,016	7.8	4.0	4.7	10.9	7.8	9.4	6.3	5.7	6.9
Amington	20.0	27	111	109									
Belgrave	26.1	45	101	107									
Bolehall	21.3	0	82	98									
Castle	18.5	12	100	94									
Glascote	33.0	73	127	124									
Mercian	19.0	0	66	71									
Spital	16.9	0	58	59									
Stonydelph	22.8	30	128	125									
Trinity	9.2	0	79	96									
Wilnecote	15.6	0	105	133									
Stoke on Trent Teaching PCT	39.1	62	3,144	3,682	6.1	6.9	4.7	10.8	11.5	7.6	8.8	7.4	4.9
Staffordshire Moorlands LA	17.4	6	847	872	3.1	5.0	5.5	7.6	7.1	6.6	5.7	3.1	3.4
Bagnall & Stanley	10.6	0	10	16									
Brown Edge & Endon	10.7	0	35	38									
Caverswall	18.5	0	10	7									
Stoke-on-Trent LA	39.5	63	3,089	3,621	6.3	7.0	4.8	10.9	11.7	7.7	8.8	7.5	5.0
Abbey Green	42.8	72	131	127									
Bentilee & Townsend	57.2	85	166	188									
Berryhill & Hanley East	38.6	60	111	136									
Blurton	43.4	85	153	175									
Burslem North	42.2	71	158	202									
Burslem South	52.5	81	223	279									
Chell & Packmoor	41.1	56	158	171									
East Valley	29.8	46	125	178									
Fenton	42.3	85	172	216									
Hanley West & Shelton	48.5	73	149	181									
Hartshill & Penkhull	23.5	12	131	119									
Longton North	29.8	31	179	186									
Longton South	37.8	72	190	221									
Meir Park & S&on	35.4	46	164	175									
Northwood & Birches Head	33.6	45	142	170									
Norton & Bradeley	36.0	58	115	129									
Stoke & Trent Vale	35.7	77	158	209									
Trentham & Hanford	13.6	0	102	124									
Tunstall	43.0	89	226	306									
Weston & Meir North	43.3	65	135	129									
Telford and Wrekin PCT/LA	25.6	29	2,024	2,245	6.7	6.6	6.0	10.5	8.7	10.3	7.1	4.2	2.7
Apley Castle	6.2	0	30	36									
Arleston	32.3	57	43	59									
Brookside	34.0	54	117	115									
Church Aston & Lilleshall	9.0	0	25	23									
College	40.5	79	46	51									
Cuckoo Oak	36.8	62	86	91									
Dawley Magna	26.0	38	130	144									
Donnington	35.9	61	76	91									
Dothill	18.7	0	30	30									
Edgmond	7.1	0	18	19									
Ercall	14.3	0	26	30									
Ercall Magna	16.8	0	21	23									
Hadley & Leegomery	29.2	32	153	197									
Haygate	29.6	0	36	39									
Horsehay & Lightmoor	9.4	0	42	54									
Ironbridge Gorge	15.5	0	23	30									
Ketley & Oakengates	25.0	0	112	141									
Lawley & Overdale	20.0	0	88	94									
Madeley	25.5	31	48	45									
Malinslee	46.4	82	103	106									
Muxton	16.3	0	95	110									
Newport East	13.8	0	25	32									
Newport North	9.6	0	26	25									
Newport South	11.0	0	21	24									
Newport West	11.7	0	21	22									
Park	14.1	0	18	22									
Priorslee	7.0	0	70	75									
St Georges	22.0	30	69	85									
Shawbirch	8.3	0	39	25									
The Nedge	25.7	17	127	140									
Woodside	45.8	100	132	124									
Wrockwardine	10.6	0	53	38									
Wrockwardine Wood & Trench	21.0	0	74	105									
Walsall Teaching PCT/LA	35.3	56	3,414	3,541	4.9	5.2	6.0	8.8	9.9	10.0	7.4	8.3	10.2
Aldridge Central & South	19.0	19	116	100									
Aldridge North & Walsall Wood	19.4	0	142	133									
Bentley & Darlaston North	37.9	76	199	210									
Birchills Leamore	50.2	90	253	237									
Blakenall	54.4	100	249	241									
Bloxwich East	39.7	57	152	136									
Bloxwich West	33.3	58	155	150									
Brownhills	25.1	12	162	152									
Darlaston South	40.6	92	188	197									
Paddock	18.8	26	120	139									
Palfrey	44.7	74	293	328									
Pelsall	18.2	16	106	101									
Pheasey Park Farm	13.2	0	92	86									
Pleck	46.0	92	261	307									
Rushall-Shelfield	26.2	13	127	137									
St Matthew's	45.8	81	216	226									
Short Heath	25.2	17	111	109									
Streetly	6.5	0	95	123									
Willenhall North	26.1	44	156	164									
Willenhall South	35.4	44	219	265									

	IMD Score	BIRTHS			STILLBIRTH			PERINATAL DEATH			INFANT DEATH		
		% in Q5	avg / yr 97-07	2007	Rates			Rates			Rates		
					97-02	03-07	2008	97-02	03-07	2008	97-02	03-07	2007
Warwickshire PCT	16.2	7	5,621	5,993	4.3	4.6	2.2	7.1	7.1	5.1	4.8	4.3	4.0
North Warwickshire LA	16.9	4	649	627	4.5	3.5	4.6	7.0	6.7	6.1	3.3	4.8	3.2
Arley & Whitacre	22.5	0	70	81									
Atherstone Central	29.4	48	52	44									
Atherstone North	15.9	0	34	32									
Atherstone South & Mancetter	22.4	0	35	35									
Baddesley & Grendon	17.0	0	39	40									
Coleshill North	8.9	0	37	38									
Coleshill South	13.7	0	25	27									
Curdworth	13.3	0	25	24									
Dordon	20.0	0	39	41									
Fillongley	16.3	0	26	35									
Hartshill	15.5	0	44	45									
Hurley & Wood End	18.3	0	43	40									
Kingsbury	9.7	0	39	32									
Newton Regis & Warton	13.1	0	34	24									
Polesworth East	16.3	0	37	29									
Polesworth West	11.5	0	37	33									
Water Orton	10.4	0	31	27									
Nuneaton and Bedworth LA	25.0	21	1,435	1,519	5.4	6.5	1.3	8.4	9.5	6.3	5.2	5.3	6.6
Abbey	36.1	43	113	125									
Arbury	17.2	0	68	78									
Attleborough	19.2	0	104	99									
Bar Pool	31.3	28	103	100									
Bede	31.8	27	65	72									
Bulkington	14.5	0	46	51									
Camp Hill	40.6	72	123	148									
Exhall	26.0	0	87	88									
Galley Common	15.0	0	116	130									
Heath	25.2	0	84	91									
Kingswood	30.8	28	89	86									
Poplar	25.5	19	104	135									
St Nicolas	8.9	0	53	49									
Slough	17.3	0	83	80									
Weddington	10.4	0	50	44									
Wem Brook	39.0	76	91	98									
Whitestone	5.1	0	58	45									
Rugby LA	14.7	3	1,034	1,130	3.2	4.1	2.5	6.1	6.2	5.1	4.8	3.9	0.9
Admirals	9.3	0	78	99									
Avon & Swift	12.7	0	22	19									
Benn	18.3	0	100	107									
Bilton	5.6	0	34	40									
Brownsover North	7.3	0	76	97									
Brownsover South	26.9	49	73	86									
Caldecott	13.0	0	50	59									
Dunchurch & Knightlow	7.4	0	41	34									
Earl Craven & Wolston	9.6	0	52	62									
Eastlands	6.1	0	54	51									
Fosse	12.5	0	32	37									
Hillmorton	13.3	0	49	49									
Lawford & King's Newnham	13.9	0	41	32									
Leam Valley	10.6	0	17	12									
New Bilton	20.7	0	80	105									
Newbold	26.3	0	83	96									
Overslade	24.4	0	59	59									
Paddock	8.4	0	37	33									
Ryton-on-Dunsmore	9.2	0	21	22									
Wolvey	8.5	0	35	31									
Stratford-on-Avon LA	9.8	0	1,131	1,217	3.7	4.2	3.1	6.5	6.4	6.3	5.0	3.9	3.3
Alcester	13.6	0	62	73									
Aston Cantlow	12.3	0	22	22									
Bardon	10.1	0	16	19									
Bidford & Salford	11.3	0	70	71									
Brailes	9.9	0	17	14									
Burton Dassett	12.2	0	29	32									
Claverdon	7.8	0	23	24									
Ettington	9.9	0	24	28									
Fenny Compton	8.3	0	30	26									
Harbury	6.1	0	52	41									
Henley	9.9	0	40	39									
Kineton	11.0	0	51	41									
Kinwarton	7.8	0	17	16									
Long Compton	13.7	0	20	29									
Long Itchington	8.3	0	24	40									
Quinton	11.9	0	30	33									
Sambourne	12.1	0	19	19									
Shipston	7.4	0	45	46									
Snitterfield	8.4	0	22	18									
Southam	7.5	0	78	64									
Stockton & Napton	7.6	0	31	35									
Stratford Alveston	6.1	0	52	91									
Stratford Avenue & New Town	12.6	0	57	80									
Stratford Guild & Hathaway	7.6	0	55	69									
Stratford Mount Pleasant	12.1	0	45	45									
Studley	11.8	0	57	62									
Tanworth	9.8	0	28	26									
Tredington	8.6	0	21	27									
Vale of the Red Horse	9.0	0	18	12									
Welford	11.7	0	16	16									
Wellesbourne	9.5	0	62	59									
Warwick LA	12.9	2	1,371	1,500	4.5	3.7	1.3	6.9	6.0	2.6	4.8	3.6	4.7
Abbey	7.4	0	74	86									
Bishop's Tachbrook	9.4	0	31	32									
Brunswick	24.5	0	108	123									

	IMD Score	BIRTHS			STILLBIRTH			PERINATAL DEATH			INFANT DEATH		
		% in Q5	avg / yr		Rates			Rates			Rates		
			97-07	2007	97-02	03-07	2008	97-02	03-07	2008	97-02	03-07	2007
Budbrooke	8.8	0	63	68									
Clarendon	16.3	0	56	50									
Crown	24.6	31	74	75									
Cubbington	8.1	0	53	48									
Lapworth	13.1	0	29	39									
Leek Wootton	11.2	0	17	23									
Manor	8.7	0	74	84									
Milverton	10.8	0	86	83									
Park Hill	5.5	0	79	80									
Radford Semele	8.7	0	24	28									
St John's	6.5	0	60	48									
Stoneleigh	11.9	0	13	12									
Warwick North	13.5	0	95	106									
Warwick South	9.3	0	105	134									
Warwick West	17.4	0	120	163									
Whitnash	10.3	0	97	106									
Willes	15.5	0	111	112									
Wolverhampton PCT/LA	36.7	59	3,089	3,386	5.2	6.2	5.9	10.1	10.8	10.8	8.0	6.7	5.4
Bilston East	51.2	96	181	209									
Bilston North	37.5	57	140	170									
Blakenhall	36.7	60	151	164									
Bushbury North	29.8	38	130	141									
Bushbury South & Low Hill	53.3	86	256	285									
East Park	46.5	88	174	204									
Ettingshall	45.9	81	217	249									
Fallings Park	38.4	44	157	172									
Graiseley	36.7	59	168	189									
Heath Town	45.4	91	185	224									
Merry Hill	20.3	17	128	128									
Oxley	32.8	45	177	162									
Park	30.1	33	123	141									
Penn	13.0	0	128	129									
St Peter's	43.3	93	193	244									
Spring Vale	34.4	63	132	133									
Tettenhall Regis	14.8	0	114	98									
Tettenhall Wightwick	15.1	0	79	92									
Wednesfield North	28.7	44	111	114									
Wednesfield South	29.8	52	147	138									
Worcestershire PCT	17.8	13	5,940	6,253	5.5	5.2	4.0	9.1	8.3	4.9	5.2	5.1	4.8
Bromsgrove LA	10.9	0	869	932	7.3	5.8	1.0	12.0	8.7	1.0	5.5	5.4	3.2
Alvechurch	9.9	0	58	67									
Beacon	11.4	0	11	10									
Catshill	14.5	0	43	41									
Charford	23.0	0	88	115									
Drakes Cross & Walkers Heath	11.0	0	48	45									
Furlongs	7.0	0	30	29									
Hagley	3.7	0	31	41									
Hillside	5.0	0	39	37									
Hollywood & Majors Green	7.4	0	33	43									
Linthurst	4.2	0	20	20									
Marlbrook	10.7	0	38	40									
Norton	5.9	0	67	71									
St Johns	16.3	0	38	36									
Sidemoor	18.5	0	51	59									
Slideslow	3.5	0	60	84									
Stoke Heath	4.3	0	26	16									
Stoke Prior	12.2	0	13	7									
Tardebigge	10.4	0	25	27									
Uffdown	13.7	0	16	14									
Waseley	13.7	0	39	40									
Whitford	10.9	0	57	36									
Woodvale	6.8	0	17	22									
Wythall South	8.3	0	19	32									
Malvern Hills LA	15.3	0	608	589	4.9	5.7	4.9	8.9	6.0	4.9	6.0	2.0	0.0
Alfrick & Leigh	12.1	0	25	26									
Baldwin	14.3	0	13	15									
Broadheath	8.8	0	29	26									
Chase	14.7	0	48	44									
Dyson Perrins	11.6	0	27	23									
Hallow	9.5	0	14	16									
Kempsey	11.5	0	31	39									
Lindridge	16.7	0	17	18									
Link	15.4	0	54	63									
Longdon	13.3	0	16	19									
Martley	14.7	0	12	15									
Pickersleigh	31.6	35	91	95									
Powick	11.6	0	32	22									
Priory	10.2	0	26	15									
Ripple	12.6	0	12	12									
Teme Valley	14.8	0	16	9									
Tenbury	14.5	0	32	36									
Upton & Hanley	13.0	0	35	29									
Wells	7.5	0	21	15									
West	11.9	0	45	38									
Woodbury	8.8	0	15	14									
Redditch LA	24.0	27	1,039	1,134	5.1	4.7	5.9	9.2	9.3	5.9	5.6	7.9	10.6
Abbey	29.7	67	70	59									
Astwood Bank & Feckenham	10.6	0	55	68									
Batchley	28.4	63	120	161									
Central	28.7	0	85	100									
Church Hill	28.9	38	118	122									
Crabbs Cross	10.1	0	67	61									
Greenlands	31.1	41	115	135									

	IMD Score	BIRTHS			STILLBIRTH			PERINATAL DEATH			INFANT DEATH		
		% in Q5	avg / yr		Rates			Rates			Rates		
			97-07	2007	97-02	03-07	2008	97-02	03-07	2008	97-02	03-07	2007
Headless Cross & Oakenshaw	16.9	0	91	101									
Lodge Park	28.0	48	67	79									
Matchborough	23.5	0	72	87									
West	8.0	0	54	48									
Winyates	25.4	28	124	113									
Worcester LA	19.9	22	1,249	1,309	5.7	4.4	5.9	9.6	7.3	8.1	6.6	5.2	5.4
Arboretum	18.7	0	76	81									
Battenhall	12.0	0	51	56									
Bedwardine	10.6	0	75	76									
Cathedral	26.5	24	120	151									
Claines	9.3	0	82	84									
Gorse Hill	39.8	83	80	82									
Nunnery	22.4	25	102	111									
Rainbow Hill	32.6	50	90	86									
St Clement	9.3	0	40	33									
St John	25.2	31	93	103									
St Peter's Parish	6.3	0	75	88									
St Stephen	14.1	0	53	54									
Warndon	44.9	80	96	112									
Warndon Parish North	7.2	0	116	105									
Warndon Parish South	6.8	0	101	87									
Wychavon LA	12.7	0	1,145	1,164	5.6	3.9	0.8	8.6	6.0	3.3	4.9	2.7	1.7
Badsey	10.0	0	24	24									
Bengeworth	15.8	0	60	74									
Bowbrook	7.6	0	24	33									
Bredon	4.7	0	20	25									
Bretforton & Offenham	7.9	0	21	20									
Broadway & Wickhamford	10.5	0	29	34									
Dodderhill	14.7	0	24	25									
Drakes Broughton	12.5	0	21	17									
Droitwich Central	20.4	0	26	22									
Droitwich East	13.0	0	49	46									
Droitwich South East	4.1	0	61	57									
Droitwich South West	12.4	0	49	54									
Droitwich West	26.0	0	79	103									
Eckington	11.9	0	21	20									
Elmley Castle & Somerville	9.5	0	20	11									
Evesham North	19.2	0	61	58									
Evesham South	12.7	0	60	56									
Fladbury	9.7	0	17	12									
Great Hampton	16.7	0	19	22									
Hartlebury	15.4	0	26	28									
Harvington & Norton	19.4	0	25	31									
Honeybourne & Pebworth	14.3	0	28	23									
Inkberrow	8.1	0	37	34									
Little Hampton	8.3	0	81	76									
Lovett & North Claines	8.6	0	50	54									
Norton & Whittington	7.0	0	44	45									
Ombersley	13.4	0	19	16									
Pershore	13.5	0	59	66									
Pinvin	11.5	0	27	23									
South Bredon Hill	8.4	0	16	11									
The Littletons	14.4	0	28	25									
Upton Snodsbury	10.6	0	21	19									
Wyre Forest LA	22.3	18	1,014	1,109	4.5	7.4	5.2	6.6	12.1	5.2	2.7	6.1	5.4
Aggborough & Spennells	15.7	0	80	65									
Areley Kings	27.2	45	58	66									
Bewdley & Arley	12.7	0	51	52									
Blakedown & Chaddesley	11.9	0	30	26									
Broadwaters	32.2	34	116	138									
Cookley	17.4	0	25	20									
Franche	13.4	0	63	68									
Greenhill	21.9	23	91	111									
Habberley & Blakebrook	19.3	32	58	58									
Lickhill	16.1	0	72	84									
Mitton	18.3	0	78	97									
Morton	13.6	0	15	16									
Offmore & Comberton	24.2	31	58	54									
Oldington & Foley Park	47.2	74	76	87									
Rock	14.5	0	19	17									
Sutton Park	22.0	0	85	110									
Wolverley	19.4	0	14	11									
Wribbenhall	14.7	0	41	45									